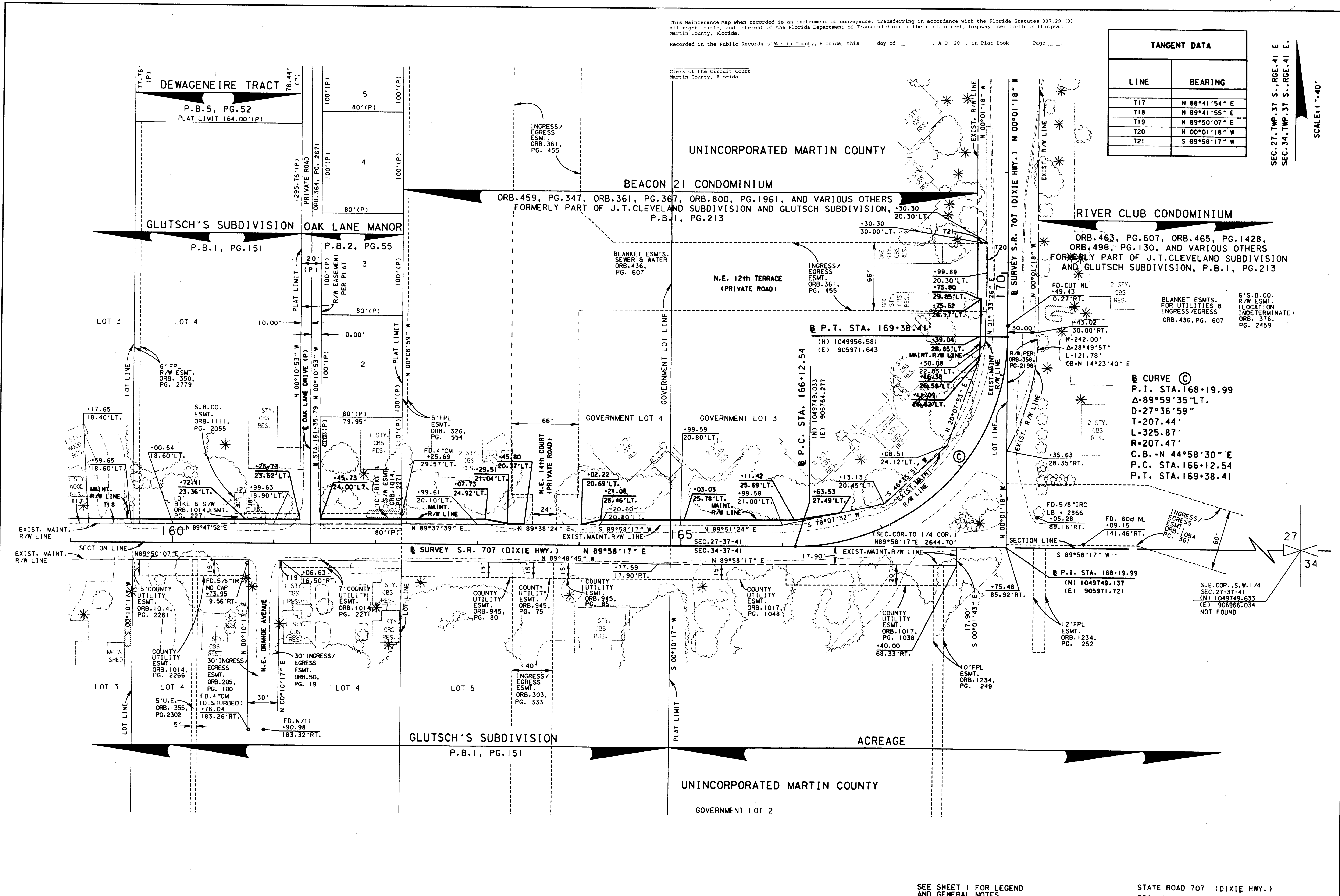


This Maintenance Map when recorded is an instrument of conveyance, transferring in accordance with the Florida Statutes 337.29 (3) all right, title, and interest of the Florida Department of Transportation in the road, street, highway, set forth on this map to Martin County, Florida.  
 Recorded in the Public Records of Martin County, Florida, this \_\_\_\_ day of \_\_\_\_\_, A.D. 20\_\_\_\_, in Plat Book \_\_\_\_\_, Page \_\_\_\_\_.

TANGENT DATA	
LINE	BEARING
T17	N 88°41'54" E
T18	N 89°41'55" E
T19	N 89°50'07" E
T20	N 00°01'18" W
T21	S 89°58'17" W

SEC. 27, TWP. 37 S., RGE. 41 E.  
 SEC. 34, TWP. 37 S., RGE. 41 E.

SCALE: 1" = 40'



**Curve C**  
 P.I. STA. 168+19.99  
 $\Delta = 89°59'35"$   
 $D = 27°36'59"$   
 T = 207.44'  
 L = 325.87'  
 R = 207.47'  
 C.B. = N 44°58'30" E  
 P.C. STA. 166+12.54  
 P.T. STA. 169+38.41

SEE SHEET 1 FOR LEGEND AND GENERAL NOTES

STATE ROAD 707 (DIXIE HWY.) FROM SAVANNAH ROAD TO ARCH STREET

<b>MAINTENANCE MAP</b> FLORIDA DEPARTMENT OF TRANSPORTATION RIGHT OF WAY MAPPING	APPROVED BY: <i>[Signature]</i> DATE: 5/12/19 DISTRICT RIGHT OF WAY SURVEYOR	PRELIM L. CEFOLIA 8/17/01	FED. PROJ. NO. N/A SECTION 89030-MAINT. (4)	MAPS PREPARED BY LB 696 KIMLEY-HORN AND ASSOCIATES FIELD BOOK NO. 15 SEE SHEET 1
		FINAL L. CEFOLIA 4/03/03		W.P.I. No. N/A SCALE: 1" = 40'
REVISION BY DATE REVISION BY DATE		CHECKED J. EDGAR 4/07/03	STATE ROAD 707 (DIXIE HWY.) MARTIN COUNTY	ITEM/SEGMENT NO. 4035911 SHEET 7 OF 12